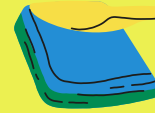




St Ann's Heath Bulletin No.11



REMINDERS



- **Year 4 STONE AGE WOW Day - Thursday, 14th December** - please refer to the email sent home on Friday, 24th November. Thank you for completing the annual consent form which allows them to go off site to the forest school. **Please don't forget to make your payment of £3.05 on Sco-Pay.** The children will need to wear their forest school kit to school with uniform, school shoes and socks in a bag with them. Thank you.
- **Please make sure your child has some spare socks and shoes (& possibly leggings or tracksuit bottoms) in their bags on PE days.** A lot of children have been falling over as the ground is wet and muddy and we don't have a full size range of spare clothes or any spare shoes.
- Please ensure your child is wearing the **required winter uniform** which consists of white shirt and tie (not a polo shirt), grey skirt or trousers with grey tights or grey socks and a jumper/cardigan with a school logo. For PE, children can wear a black baselayer under their school PE top and hoodie if they wish. A full list of uniform requirements can be found in children's planners (Page 8) or on our website. Don't forget that our second-hand uniform shop has lots of items for sale - please email fosahuniform@hotmail.com to make enquiries.
- **Year 5 & 6 2024 Residential Trips** - Thank you to the parents who have been paying their monthly instalments or made payments so far. November's monthly payment was due on 30th November (Y5 monthly payment of £50 and Y6 monthly payment of £83).
- **School Dinners - Spring Term 2024** - don't forget to book your child's dinners in for the new year - maybe set yourself a reminder to get the first week's dinners booked in by Boxing Day!



Coming up THIS Week ..

DATE	EVENT
Thursday, 7th December	Last Y5 swimming for this term
Thursday, 7th December	Author visit in school refer to email sent home 27/11 about buying books



WHOLE SCHOOL - PAPERCHAIN GAME

50p per chain or 3 £1

FOSAH are running the paper chain game again this year.

Children can buy the chains from their classteachers (50p a chain or £1 for 3), their names and classes will be written on each chain and then hung up around the school. Mrs King and Mrs O'Connor will cut down at the end of term and prizes will be given to the children whose chains are cut.

Children can purchase as many chains as they want from their classteachers from **tomorrow** –good luck everyone!

CHRISTMAS CONCERT 2023 - MESSAGE FOR CAST MEMBERS

Performances are taking place **NEXT WEEK Tuesday, 12th December and Wednesday, 13th December at 6.30pm** – Children need to be back at school at 6.15pm on **BOTH** nights please. We anticipate that the show will last for approx. 60mins so if you're not coming to watch, children will need collecting at 7.30pm.

Please refer to email sent on 28/11 for costume information.

Tickets are available to purchase via Sco-Pay under 'products', they are £3 each. Seats are not numbered, it'll be first come, first seated basis with doors opening at 6.15pm (the same time that children can be dropped off). Children in the concert will come to a classroom before the concert starts whilst parents take their seats.



COME AND LEARN JUDO AT YOUR SCHOOL



SESSIONS RUN EITHER BEFORE OR AFTER SCHOOL

GB ATHLETE COACHES TEACHING TO THE HIGHEST LEVEL
BE COACHED BY A STAR JUDOKA!

JUDO FACTS
The judo moral code consists of 8 virtues including Honour, Humility, Courage, Friendship, Politeness, Self control, Modesty and Respect.
Judo is an Olympic sport, watch team GB in Paris 2024 and beyond.
Core Judo Academy is one of the top judo clubs in the UK

 SIGN UP TO YOUR SCHOOL CLASS NOW
FOLLOW THE QR CODE FOR ALL THE CORE JUDO SCHOOL JUDO CLASSES



School uniform fund

Need help with the cost of school uniforms?
If your child needs a school uniform, you may be able to receive some financial help.

Who can apply for a voucher?

- 1 Household annual income below £33,000.
- 2 Savings below £6,000.
- 3 Must be liable for Council Tax.
- 4 From nursery age up to school Year 11.



Get more information on eligibility, and how to apply for funding by scanning the QR code or visit:
www.runnymede.gov.uk/benefits-support/household-support-fund

 Runnymede
BOROUGH COUNCIL

THANK YOU SAMANTHA KINGHORN!



On Wednesday, 6th December we had a visit from **Samantha Kinghorn MBE**, a Scottish World Champion wheelchair racer and TV presenter.

Samantha spoke to the whole school about her career so far and her dreams of a gold medal in the 2024 Para Olympics next year. We were all moved by her resilience and determination and the children thoroughly enjoyed meeting her and asking lots of questions. **Thank you Samantha and good luck for next year!**

SCARLET FEVER INFORMATION

WHAT IS IT?

An infection caused by Group A Strep - exotoxin release causes rash and fever

(note 20% of health children are colonised with strep A in their throat or skin)

WHAT ARE THE SYMPTOMS?

Fever (>38), sore throat, general malaise.

12-48 hrs later a sandpaper rash appears. Pastia's line are dark, hyperpigmented areas, particularly in skin creases.

Can also get perioral pallor, cervical lymphadenopathy, and a strawberry tongue.

Symptoms resolve within a week. Can get peeling skin on fingers after this.

THE RASH

The rash usually starts on abdomen then spreads to neck and limbs.

It feels rough, like sandpaper. There is often a red face with perioral pallor.

DO I TREAT?

Most mild cases get better on their own. However, it is highly contagious and there is a risk of transmission to someone in a vulnerable group (immunocompromised, co-morbidities, or co-existent chicken pox).

There is also a (low) risk of suppurative (e.g. sinusitis, tonsillar abscess, IGAS) or non-suppurative (rheumatic fever, glomerulonephritis) complications.

Treatment is with 10 days of penicillin (or azithromycin if allergic).

EXCLUSION PERIOD

Children need to be excluded until after 24 hours of antibiotics

With no treatment they need to be excluded for 2 weeks.

Diagnosis is usually clinical, but a throat swab may be appropriate in some cases.

We have had a couple of confirmed cases of Scarlet Fever in school, as we normally do at this time of year. Please see the information on this page for the symptoms to look out for.

Children can return to school within 24 hours of taking antibiotics **if feeling well enough.**

Do I need to keep my child off school?

HSC Public Health Agency

Chicken Pox Until all spots have crusted over	Conjunctivitis No need to stay off but school or nursery should be informed	Diarrhoea & Vomiting 48 hours from last episode	Glandular Fever No need to stay off but school or nursery should be informed	Hand, foot & mouth No need to stay off but school or nursery should be informed	Impetigo Until lesions are crusted & healed or 48 Hours after commencing antibiotics
Measles or German Measles 4 days from onset of rash	Mumps 5 days from onset of swelling	Scabies Until after first treatment	Scarlet Fever 24 hours after commencing antibiotics	Slapped Cheek No need to stay off but school or nursery should be informed	Whooping Cough 48 Hours after commencing antibiotics
Flu Until recovered	Head Lice No need to stay off but school or nursery should be informed	Threadworms No need to stay off but school or nursery should be informed	Tonsillitis No need to stay off but school or nursery should be informed		

Behaviour Support Coffee Morning THIS Friday

An email was sent home on 13/11 regarding a coffee morning, THIS Friday 8th December at 9.00am. It will focus on ways in which you can support your child with their behaviour at home.

To enhance the discussion and provide valuable insights, we are delighted to welcome **guest speaker Mark Richards, a Specialist Teacher in Inclusive Practice, into school**. Over the years, Mark has been an invaluable resource in supporting our school with his expertise, and he will be sharing some practical strategies and advice to manage behavioural needs effectively. If you would like to join us on Friday 8th December, please complete the online form (link below) so that we know how many parents and carers will be attending the session.



<https://forms.office.com/e/5NjNxuAh6E>



Don't FORGET it's Christmas Lunch
& Mufti Day Next Wednesday, 13th
December



Dates for your diaries

DATE	EVENT
Thursday, 7th December	Author visit in school refer to email sent home 27/11
Tuesday, 12th December	6.30pm Christmas Concert
Wednesday, 13th December	Christmas Mufti Day (mufti with a Christmas theme e.g. Christmas jumper if you have one) Christmas Lunch Day 6.30pm Christmas Concert
Thursday, 14th December	Year 4 WOW Day - refer to email sent home 24/11
Friday, 15th December	1.30pm Break Up for Christmas
Tuesday, 2nd January 2024	INSET DAY - School Closed
Wednesday, 3rd January	Spring Term Starts TODAY

All future dates & events can be found on our website - www.stannsheath.org